



WORLDWIDE ELECTRIC MOTOR DATA SHEET

PEWWE50-18-326T



HORSEPOWER	50		
RPM / POLES	1800 / 4		
VOLTAGE / PHASE	230 / 460 V / 3		
FRAME	326T		
ENCLOSURE / DEGREE OF PROTECTION	TEFC / IP55		
FREQUENCY	60 HZ Suitable For 50 HZ Operation With 1.0 SF		
FULL LOAD SPEED	1775 RPM		
SERVICE FACTOR	1.25		
INSULATION CLASS	F		
FULL LOAD AMPS; 230 / 460	115 / 57.6 A (Usable On 208V At 127 A)		
LOCKED ROTOR AMPS (STARTING); 230 / 460	725 / 362.5 A		
NO LOAD CURRENT	42 / 21 A		
NEMA CODE LETTER	G		
EFFICIENCY / POWER FACTOR	<u>LOAD</u>	<u>EFF.</u>	<u>P.F.</u>
	100 %	94.5%	0.86
	75 %	94.9%	0.82
	50 %	94.7%	0.73
DUTY CYCLE	S1 / Continuous		
TORQUE	<u>FULL LOAD</u>	<u>LRT</u>	<u>BDT</u>
	148 lb.ft.	160%	260%
SLIP	1.40 %		
NEMA DESIGN	B		
MOMENT OF INERTIA	6.89 lb.ft.²		
MAX. TIME LOCKED ROTOR (Hot)	12 Seconds		
SOUND PRESSURE LEVEL	72 dB (A)		
MAX. AMBIENT TEMPERATURE	40° C		
MAX. ELEVATION	3300 Ft.		
TEMPERATURE RISE (At Full Load)	80° C		
DE BEARING	6312 C3		
ODE BEARING	6311 C3		
REGREASING INT. - DE BEARING	4000 Hours		
REGREASING INT. - ODE BEARING	4000 Hours		
GREASE TYPE	SKF LGHP 2		
MOUNTING	F1 (F2 Suitable)		
ROTATION	Bi-Directional		
SHAFT MATERIAL	1045 Carbon Steel		
INVERTER RATING	10:1 CT / 20:1 VT PWM Type		
CONNECTION DIAGRAM	230 / 460 V - 12 Lead Δ		
AREA CLASSIFICATION	Class I, Division 2, Groups A, B, C, D		
APPROXIMATE WEIGHT	578 lbs.		



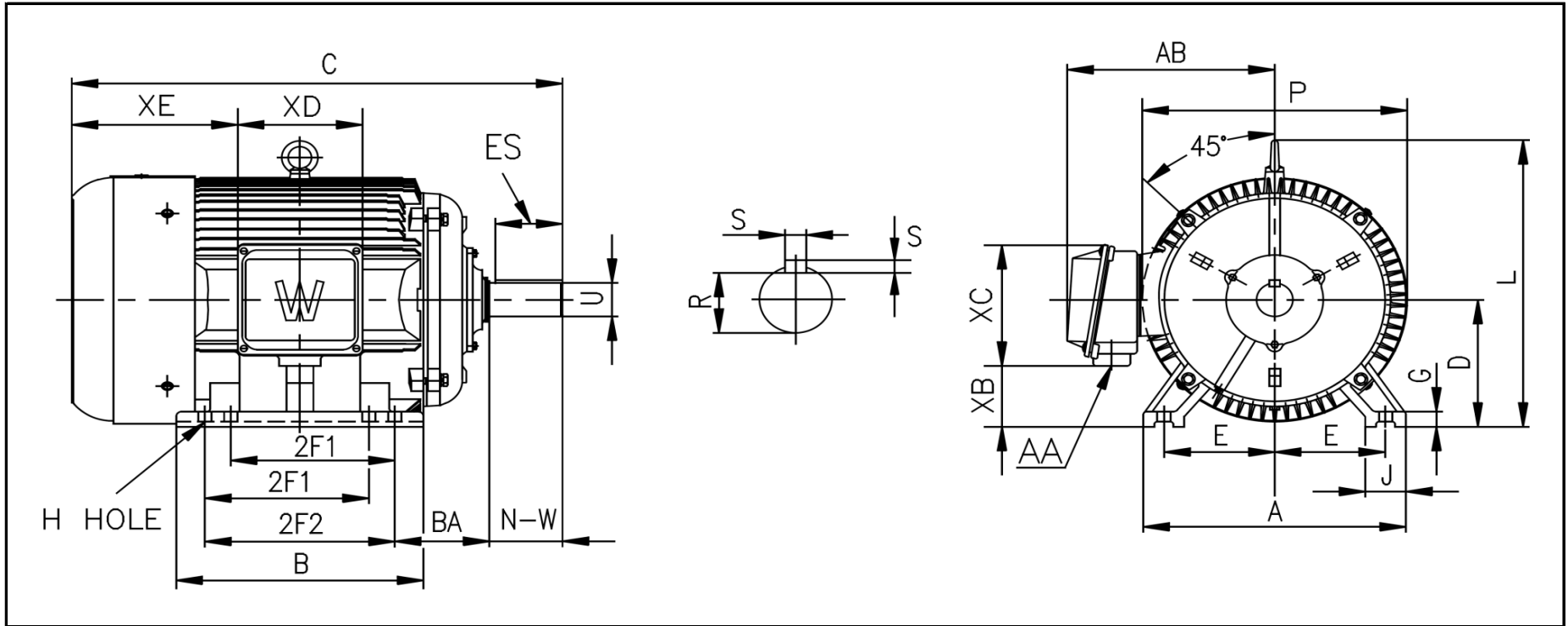
CC006A





WORLDWIDE ELECTRIC MOTOR DRAWING

PEWWE-326T



DIMENSIONS - INCHES

MOUNTING					A	B	C	D	G	J	P	L	AB
E	2F1	2F2	H	BA									
6.25	10.5	12	0.66	5.25	16	15	31.2	8	0.99	2.8	15.7	16	14.5

KEY		KEYSET	SHAFT		TERMINAL BOX				
S	ES	R	N-W	U	AA	XB	XC	XD	XE
0.5	3.91	1.845	5.25	2.125	2	2.4	10.8	9	11.25

PERFORMANCE CURVES

WorldWide Electric Corporation

1 (800) 808-2131

Worldwideelectric.net

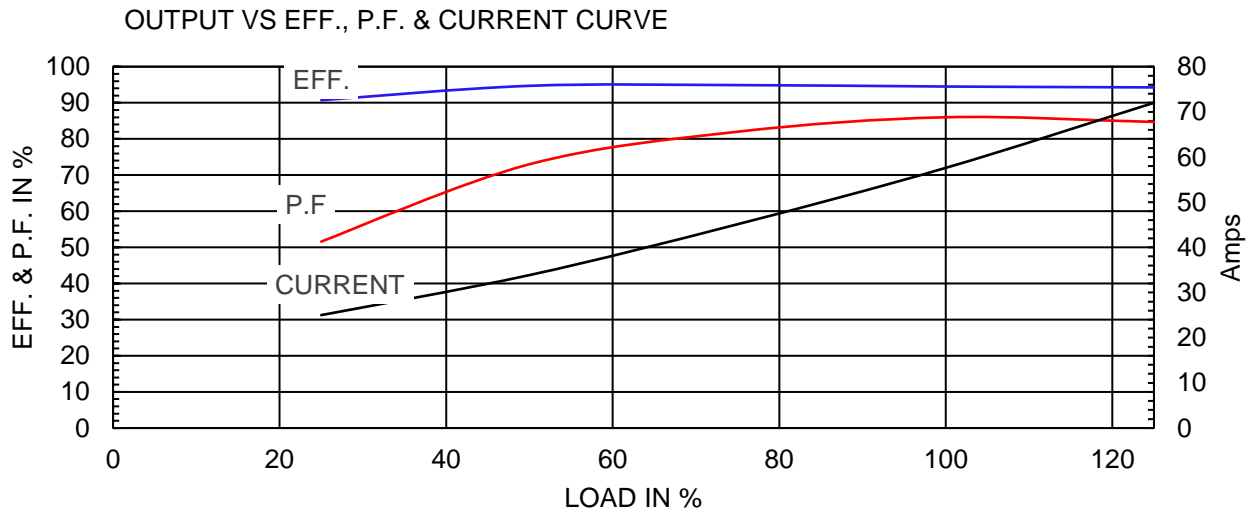
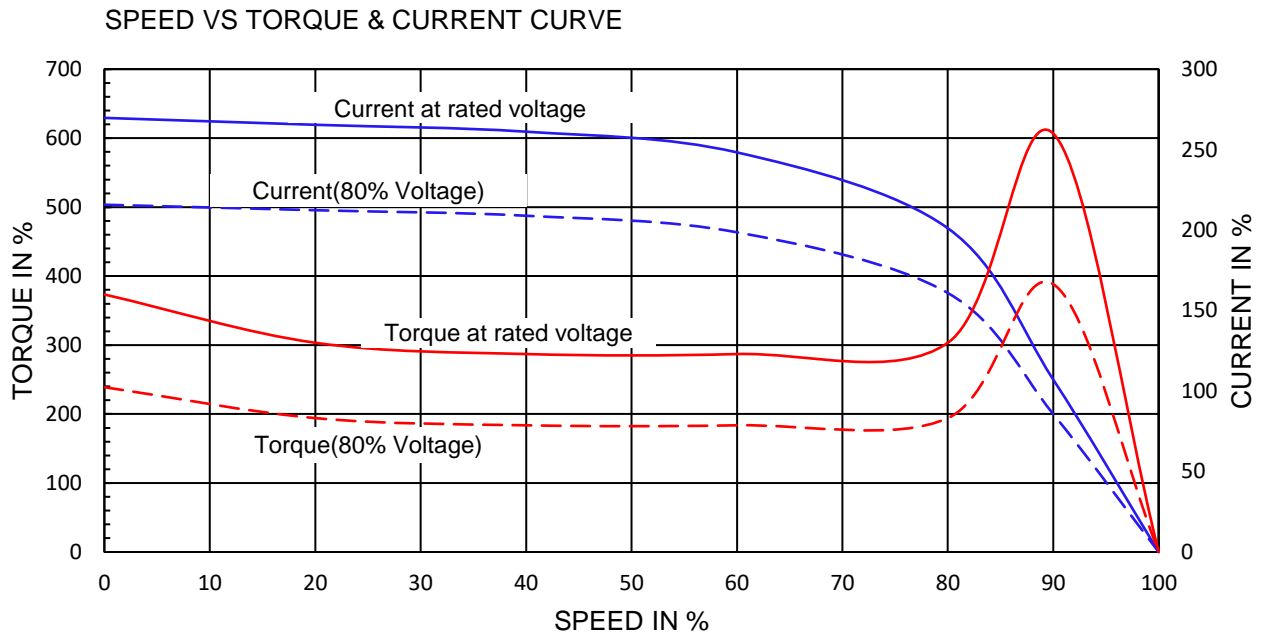


Premium Efficiency Motor:

PEWWE50-18-326T

Document Generated: 25-Jun-2020	Customer:
Document ID:	

Motor Type	PEWWE		FL Speed	1775		
Output Rating (HP)	50		LRT (%FLT)	160	460 volt FLA	57.6
Full Load Torque	148	lb.ft	BDT (%FLT)	260	230 volt FLA	115A
Rotor Wk^2	6.89	lb-ft^2				



NAMEPLATE / WIRING

WorldWide Electric Corporation

1 (800) 808-2131

Worldwideelectric.net






Premium Efficiency Motor:

PEWWE50-18-326T

Document Generated: 21-Aug-2019
Document ID:

Customer:

SAMPLE NAMEPLATE DATA

 		PREMIUM EFFICIENCY 3-PHASE INDUCTION MOTOR			CC006A ISO9001	259277 		
Model	PEWWE50-18-326T		Ser No.	ZP				
HP	50	S.F.	1.25	Type		Encl	TEFC IP55	
Frame	326T	P.F.	0.86	Ins Cl	F	Rating	40°C Amb Cont	
Voltage	230/460	Hz	60Hz	Design	B	DE Brng	6312 C3	
Amps	115A / 57.6A	RPM	1775	Code	G	ODE Brng	6311 C3	
Nom. Eff.	FL 94.5 %	3/4 94.9 %	230/460 V		Date			
Usable on 208V network at		127	Amps 1.0SF	Class I DIV. 2 Groups A B C D		Amb. 40°C	T3C(160°C)	
10:1 CT		20:1 VT	PWM VFD 1.0SF	Class I Zone 2 IIC		Amb. 55°C	T3A(180°C)	
50Hz 50 HP 200/400 V V 135 / 67.5 A 1475 rpm 1.0SF								
WorldWide Electric Corporation								
			Low Voltage ⑥ ④ ⑤ ⑦ ⑧ ⑨ 12 10 11 ① ② ③ L1 L2 L3			High Voltage ④ ⑤ ⑥ ⑦ ⑧ ⑨ 12 10 11 ① ② ③ L1 L2 L3		

